

Ocean Teens

Classification Worksheet

STAGE 4 YEAR 7 & 8 – LINKS: ACSSU111 • ACSHE119 • ACSHE121 • ACSIS130
NZ: LIVING WORLD • LEVEL 5 & 6

SECTION 1

What it means?

Complete the close passage by using the words from the word bank.

BANK!

Helps
Scientists
World
Things
Systems
Identify
Process
Commonly
Key
Characteristics

Classification is the _____ of organising objects or living _____ based on their similarities or differences in _____. Classification _____ us to better understand the living _____ in which we live in.

_____ use a variety of organising _____ and keys to help classify and _____ animals and plants. The most _____ used are Linnaean System and Dichotomous _____.

SECTION 2

Organising

List the groupings in the hierarchical classification system, from largest to smallest.

K	
P	
C	
O	
F	
G	
S	

BANK!

Family
Species
Kingdom
Genus
Phylum
Class
Order

Ocean Teens

Classification Worksheet

STAGE 4 YEAR 7 & 8 – LINKS: ACSSU111 • ACSHE119 • ACSHE121 • ACSIS130

NZ: LIVING WORLD • LEVEL 5 & 6

SECTION 3

Dichotomous Key

Numerous keys have been designed to identify species. A dichotomous key gives two choices where only one choice is valid. Below is a dichotomous key used to identify different species of animals. Use this key to identify five animal species found at SEA LIFE.

1a	5 gill slits on either side of its body	Go to 2
1b	Gill cover or gill slits under its body	Go to 4
2a	Not spotted	Go to 3
2b	Spotted	Leopard shark
3a	Visible thin, needle-like teeth	Grey Nurse Shark
3b	Teeth not visible	Sandbar Whaler Shark
4a	Flattened body shape with eyes on top	Go to 5
4b	More upright/vertical body shape	Go to 7
5a	Pointed, triangle shaped fins	Go to 6
5b	Large round fins	Smooth Stingray
6a	Long whip-like tail	Southern Eagle Ray
6b	Shark-like tail and fins	Go to 10
7a	Golden in colour with black stripes	Golden Trevally
7b	Silver/grey in colour	Go to 8
8a	Large dark splotches over body	Potato Cod
8b	No large dark splotches over body	Go to 9
9a	Black dot near gill cover, silver colour	Silver trevally
9b	Pink-silver colour	Snapper
10a	Spiked ridge hump	Bowmouth Guitarfish
10b	Small fins on tail, none on side	Fiddler Ray

Look for 5 different animals you can see in one of the exhibits and use the key to see if you can identify which species it is.

Animal 1 is _____ Animal 4 is _____

Animal 2 is _____ Animal 5 is _____

Animal 3 is _____

Ocean Teens

Classification Worksheet

STAGE 4 YEAR 7 & 8 – LINKS: ACSSU111 • ACSHE119 • ACSHE121 • ACSIS130

NZ: LIVING WORLD • LEVEL 5 & 6

SECTION 4

Phylum Chordata

Features: Notochord (a flexible rod supporting the body) at some stage, tail at some stage. How can you tell the difference between sharks, rays and bony fish?

	Class Chondrichthyes (Sharks and Rays)	Class Actinopterygii (Bony Fish)
Features		
Examples in aquarium		

SECTION 5

Phylum: Echinodermata



Class: Asteroidea
Example: Sea Star



Class: Echinoidea
Example: Sea Urchin

Sea Stars and Sea Urchins appear very different but are related and are in the same phylum. What do they have in common?

Ocean Teens

Classification Worksheet

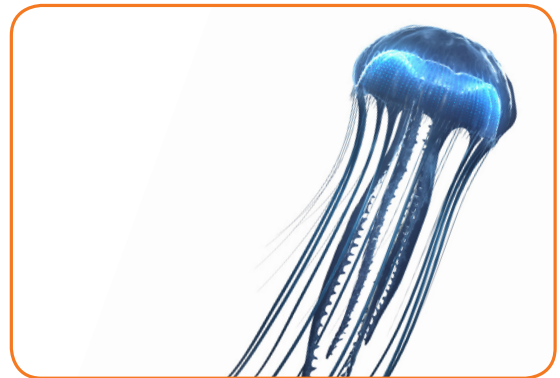
STAGE 4 YEAR 7 & 8 – LINKS: ACSSU111 • ACSHE119 • ACSHE121 • ACSIS130
NZ: LIVING WORLD • LEVEL 5 & 6

SECTION 6

Phylum: Cnidaria



Class: Anthozoa
Example: Coral, Anemones



Class: Scyphozoa
Example: Sea Jellies

Draw a picture that illustrates the similarities between Anemone and Sea Jellies.

